

Green Schoolyards Community Assessment

Municipality or School District Name: _____

A growing body of research suggests that when communities green their schoolyards, they experience a variety of benefits. Time spent learning and playing in nature can help children reach their full academic and social-emotional potential and access to safe, natural areas can enhance children's health, from improving cardiovascular vitality and weight management to reducing stress and ADHD symptoms. In addition, regular access to high quality green space inspires strong connections to the natural world. The benefits of green schoolyards are even greater for children where access to green space is sparse, a challenge often faced by low income communities and communities of color.

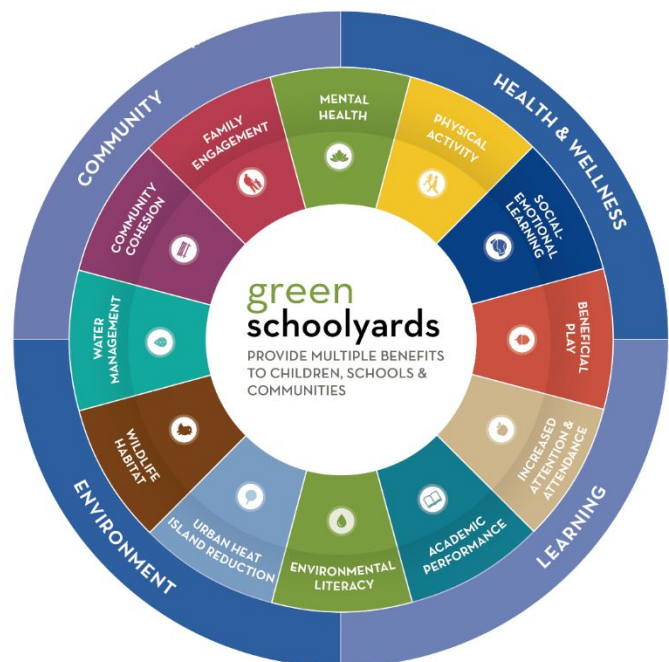
Though a new green schoolyards program can be built upon existing plans, policy and partnerships, starting a municipality-wide or district-wide green schoolyards program requires some specific planning to be successful and sustainable. Please take the Community Assessment on pages 2-4 to identify allies and policies currently in place that can help you implement green schoolyards in your community.

Making the Case:

Existing Plans and Policies that Support Green Schoolyards

Green schoolyards have many benefits, some of which are shown in this graphic. What policies exist in your community help make the case for the benefits of place to support implementation of green schoolyards? More information and examples of policies can be found in the "[Identify Policies](#)" section of the Children & Nature Network's **Green Schoolyards Resource Hub**:

childrenandnature.org/initiatives/schoolyards/hub



Green Schoolyards Community Assessment



Please check existing plans and policies in your community:

- ☐ School District Facilities Master Plan
- ☐ School District/State Environmental Literacy Plan
- ☐ School District/State support of Next Generation Science Standards
- ☐ School District Social Emotional Learning Goals
- ☐ School District, City, Region or State Sustainability Plans
- ☐ School District Health and Wellness Policies
- ☐ School District Physical Activity Mandates
- ☐ School District Recess Mandates
- ☐ School District Shade Policies
- ☐ Green Stormwater Infrastructure or Groundwater Plans
- ☐ Municipality, Region or State Climate Change Plans
- ☐ Regional Transportation Plans
- ☐ Municipality, Region or State Master Plans
- ☐ Parks Master Plans
- ☐ Biodiversity Policies
- ☐ Planning/Zoning Codes
- ☐ Joint Use Agreements
- ☐ Municipality, Region or State Forestry Plans
- ☐ Local Utility Plans
- ☐ Composting Regulations
- ☐ Obesity Prevention and/or Walkability Plans
- ☐ Other:
- ☐ Other:
- ☐ Other:



Potential Partners

Starting and supporting a successful green schoolyards program requires many partners representing different areas of expertise. Which partners are you already working with in your green schoolyards discussions? Which partners could or should your group be working with? *Please fill in the chart.*

Currently working with	Could or should be	Organization Type	Department	Contact Name
		School District	Superintendent/CEO's office	
		School District	Capital Improvement/Facilities	
		School District	Curriculum/Instruction	
		School District	Grants	
		School District	Partnerships	

		School District	Nutrition	
		School District	School Board	
		School District	Other	
		Government Agency	Local Water Agency	
		Government Agency	Public Works	
		Government Agency	Health	
		Government Agency	Transportation	
		Government Agency	Planning	
		Government Agency	Police	
		Government Agency	Other	
		Government Agency	Other	
		Mayor's Office		
		Town President		
		Non-Profit	Health equity advocacy and policy support	
		Non-Profit	Out-of-school time programming	
		Non-Profit	Garden installation and programming	
		Non-Profit	Schoolyard stewardship support	
		Non-Profit	Parent engagement opportunities	
		Non-Profit	Violence prevention programming	
		Non-Profit	Walkability and safe routes audits	
		Non-Profit	Other	
		Non-Profit	Other	
		Local College or University	Community engagement and/or schoolyard design	
		Local College or University	Evaluation	
		Local College or University	Other	
		Park Agency	Planning/Design	
		Park Agency	Maintenance	
		Park Agency	Programming	

		Community-Based Organizations	Schoolyard design engagement and recruitment	
		Community-Based Organizations	Community representation at smaller tables	
		Community-Based Organizations	Co-use of school grounds for diverse programs such as summer free and reduced lunch distribution, community events, performances, etc.	
		Community-Based Organizations	Relationships with schools and community in targeted areas	
		Community-Based Organizations	Other programming	
		Community-Based Organizations	Other	
		Community-Based Organizations	Other	
		Corporate Partners		
		Corporate Partners		



What other opportunities do you see for supporting or funding green schoolyards in your community? *Use more space or add materials as needed.*

Consider inviting all of the people listed to a meeting to discuss their interest in creating a green schoolyards program, using the materials in the Green Schoolyards Advocacy Toolkit, which can be found at childrenandnature.org/initiatives/schoolyards/.